

LAND / LOT FOR CONDOMINIUM DEVELOPMENT FEATURED DEVELOPERS



## LAND FOR SALE OF 1864 M2 IN BRISAS MARQUES ON THE SCENIC WITH VIEW OF PLAYA DIAMANTE,

Land: 1864 m2

\$ 14,912,000.00 MXN  
\$ 853,611.76 USD



Te conseguimos el crédito hipotecario a tasa fija.

## Amenities

Extras  
Residential land  
Land for developers

## Property details

Lot for sale of 1864 m2 in Fracc. Brisas Marques, going down the Escénica towards Puerto Marques, with an excellent view of Playa Diamante, the bay of Puerto Marques, Punta Diamante and even the Tres Palos lagoon.

Descending, residential or single-family, with the following boundaries:

To the North with 30 meters adjacent to the Scenic Highway

To the south with 28 meters adjacent to the neighboring lot

To the East with 63 meters adjacent to a neighboring lot

To the west with 60 meters adjacent to the neighboring lot

Sales and rentals  
+52 744 107 4026  
+52 744 446 7080

House remodeling  
+52 744 224 9669

Whatsapp attention  
+52 744 107 4026

## Facade

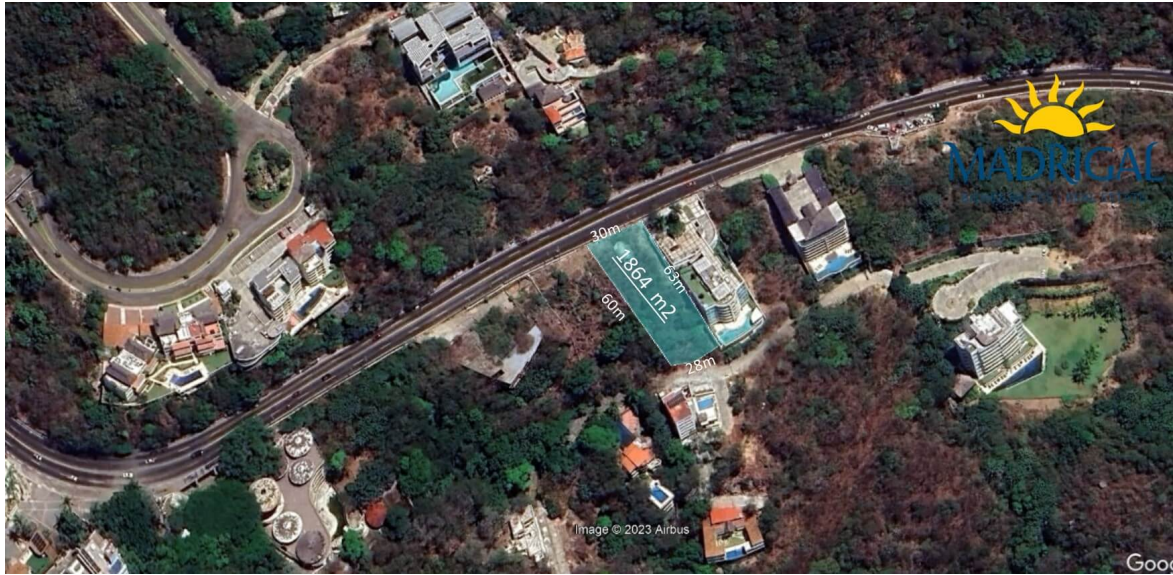


Sales and rentals  
+52 744 107 4026  
+52 744 446 7080

House remodeling  
+52 744 224 9669

Whatsapp attention  
+52 744 107 4026

# Plans



Sales and rentals  
+52 744 107 4026  
+52 744 446 7080

House remodeling  
+52 744 224 9669

Whatsapp attention  
+52 744 107 4026

## Views



Sales and rentals  
+52 744 107 4026  
+52 744 446 7080

House remodeling  
+52 744 224 9669

Whatsapp attention  
+52 744 107 4026